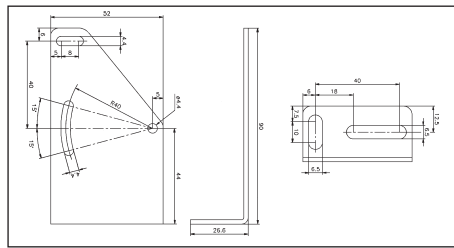
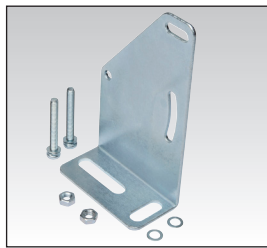


# Photoelektrische Sensoren Zubehör Befestigungsmaterial

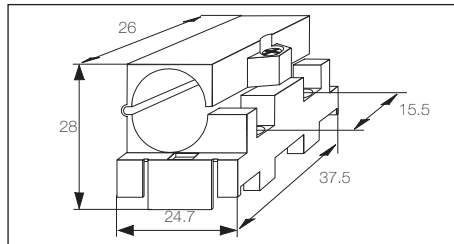
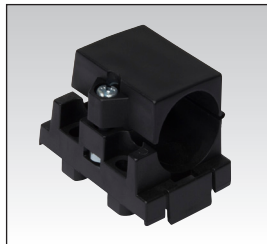
**CARLO GAVAZZI**

## alterung, PM-Produktreihe lang, Typ MB02



<b>Bestellnr.</b>	MB02
<b>Material</b> Gehäuse	Stahl, verzinkt

## Halterung, Typ MB 18A

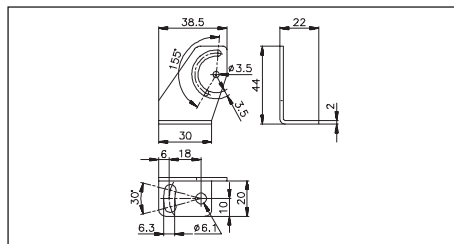


<b>Bestellnr.</b>	MB18A
<b>Material</b> Gehäuse	POM, schwarz

## Halterungen, PA-Produktreihe, Typ APA-2 und APA-3



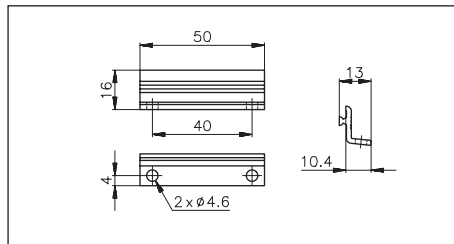
APA-2



<b>Bestellnr.</b>	APA-2
<b>Material</b> Gehäuse	Stahl, schwarz

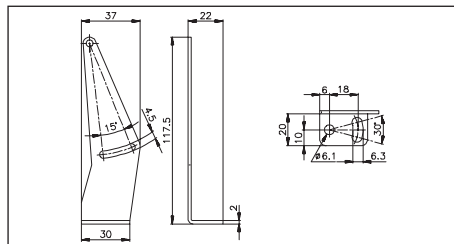


APA-3



<b>Bestellnr.</b>	APA-3
<b>Material</b> Gehäuse	Aluminium, eloxiert

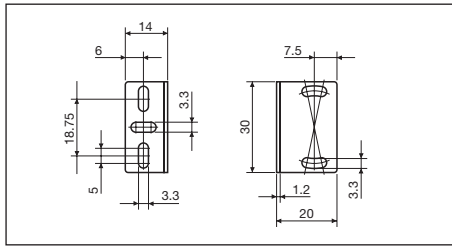
## Mounting Bracket, PB-Series, Type APB-1



<b>Bestellnr.</b>	APB-1
<b>Material</b> Body	Stahl, schwarz

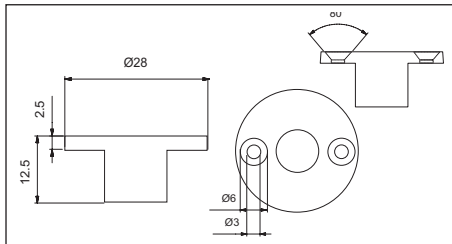


### Halterung, Typ APD32-MB3



<b>Bestellnr.</b>	APD32-MB3
<b>Material</b> Gehäuse	Stahl, chromatiert

### Halterung, Typ AMO-MB3



<b>Bestellnr.</b>	AMO-MB3
<b>Material</b> Gehäuse	PC